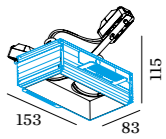
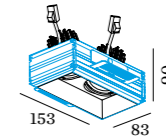
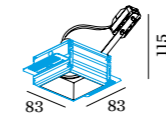
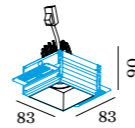
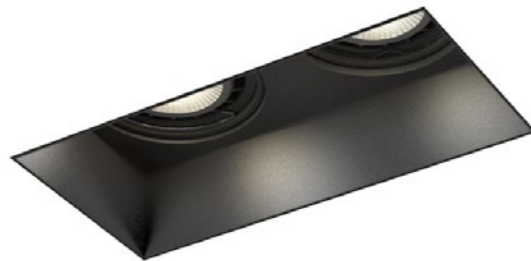




STRANGE

CEILING RECESSED



1.0 LED

LED 7/10W | 350-500mA | 18Vf
COB 3-step | excl. power supply
aluminium powder coated

0.43kg IP20 0.3-1

86x86 35°/35° 355° 95 4-25

	CODE
	131161W_
	131161B_

Light Colour Selection

	LUMEN	CRI	CODE
2700K	420-590	>90	3
3000K	470-640	>90	5
1800-2850K	320-440	>90	9

ALWAYS USE

plasterkit 90017116

power supply

	CODE
350mA 10W	90213402
500mA 10W	90214403
500mA 15W dim	90224501

more power supplies on page 468

1.0 PAR16

PAR16 max.50W | GU10
220-240VAC | 50-60Hz
aluminium powder coated

0.41kg IP20 0.9-1

86x86 35°/35° 355° 120 4-25

	CODE
	13120W0
	13120B0

ALWAYS USE

plasterkit 90017116

OPTIONAL

PAR16 LED GU10 6W
phase-cut dim

	CODE
2700K	901228W2
3000K	901228W4
1800-2850K	901229S9

more lamps and specs on page 471

2.0 LED

2xLED 7/10W | 350-500mA | 18Vf
COB 3-step | excl. power supply
aluminium powder coated

0.74kg IP20 0.3-1

86x156 35°/35° 355° 95 4-25

	CODE
	131261W_
	131261B_

Light Colour Selection

	LUMEN	CRI	CODE
2700K	2x420-590	>90	3
3000K	2x470-640	>90	5
1800-2850K	2x320-440	>90	9

ALWAYS USE

plasterkit 90017117

power supply

	CODE
350mA 10W	90213402
500mA 10W	90214403
500mA 15W dim	90224501

more power supplies on page 468

2.0 PAR16

2xPAR16 max.50W | GU10
220-240VAC | 50-60Hz
aluminium powder coated

0.70kg IP20 0.9-1

86x156 35°/35° 355° 120 4-25

	CODE
	131220W0
	131220B0

ALWAYS USE

plasterkit 90017117

OPTIONAL

PAR16 LED GU10 6W
phase-cut dim

	CODE
2700K	901228W2
3000K	901228W4
1800-2850K	901229S9

more lamps and specs on page 471