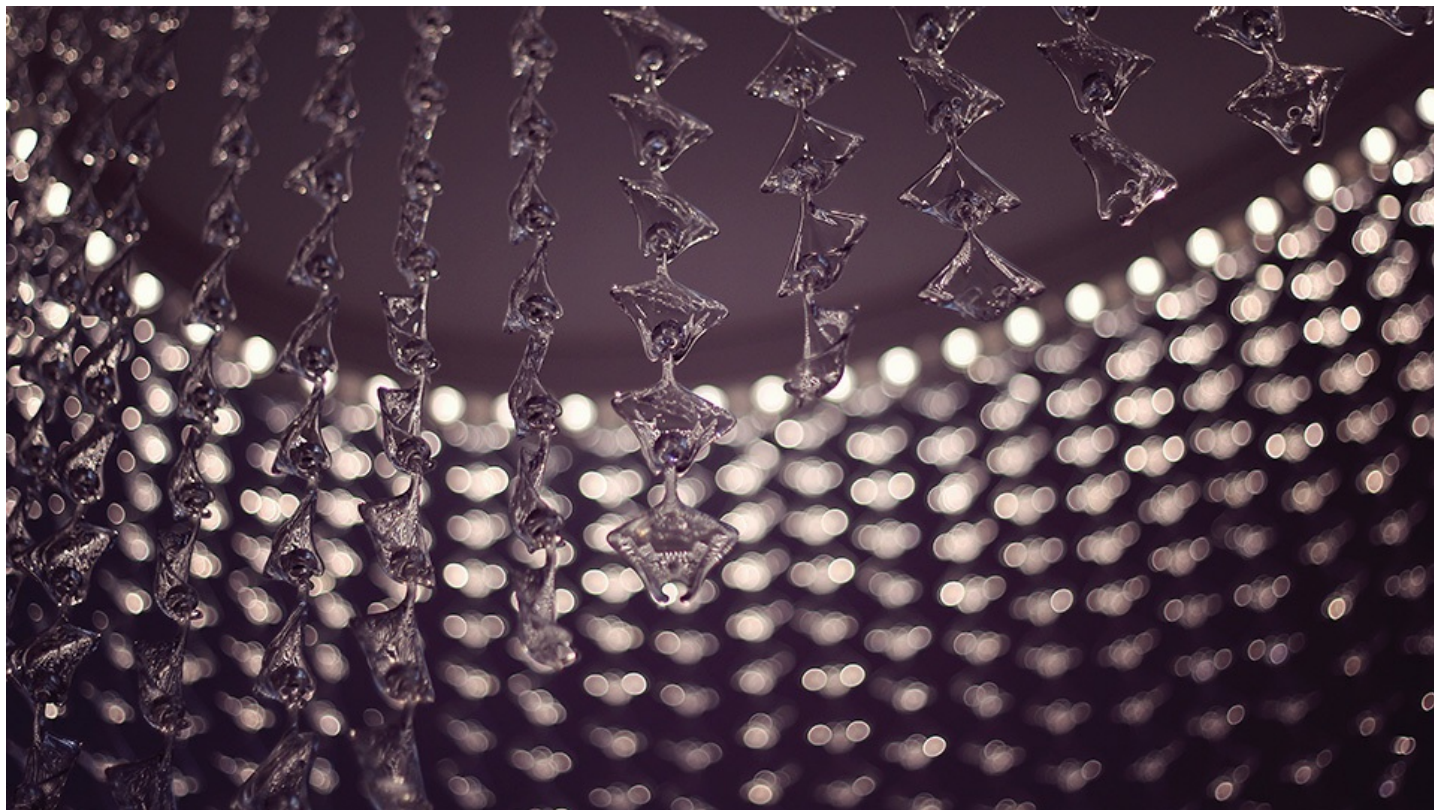


## PRODUCT DATA SHEET

### Botanic Rain



"Botanic rain is made of an advanced crystal polymer able to refract and reflect light. Its suspended leaf modules, inspired by botanic shapes, create a polymer curtain wall system". Materials: aluminium lighting profile. Suspended elements made of injectionmoulded thermoplastic material. The profile is available recessed or ceilingmounted and with different lengths.

Metal Grey



Polished White

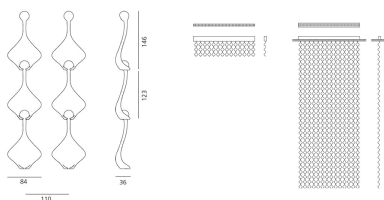


Ceiling

IP



W	Dimensions	Color	Code	Product name
	3,6x8,4 cm	<input type="radio"/>	NEW *	Botanic Rain - Metal Grey
		<input type="radio"/>	NEW *	Botanic Rain - Polished White

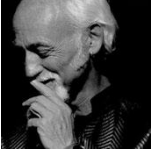


\* The product is not yet available.

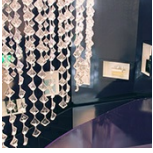
## Designers

## Projects

---



› Ross Lovegrove



› Marionnaud