



Cover L

design Midj R&D

Cover chair with wooden four legs frame finish dark oak, natural oak or white laquered. Upholstered shell in leather, ecoleather, fabric or custom's fabric.

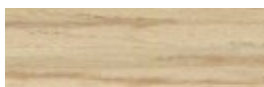


Finishing and Materials

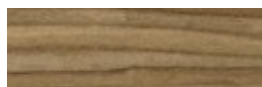
Structure



Stained wood Dark Oak finish



Stained wood Natural Oak finish



Stained wood Walnut finish



Stained wood Flamed Walnut finish

Coating



Mirage Fabric
16 colors



Long Life Fabric
13 colors



Natural Wool Fabric
15 colors



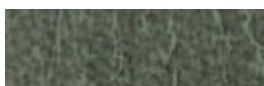
Pix Fabric



Inca Ecoleather
17 colors



Magic Ecoleather
17 colors



Vintage Ecoleather
4 colors



Fiore Leather
15 colors



Special Leather
8 colors



Vintage Leather
4 colors



Bubble fabric
14 colors



Hot Fabric
13 colors

Dimensions



Dimension	cm	inch
A	84	33.1

Dimension	cm	inch
B	46	18.1
C	55	21.7
D	46	18.1

Volumetric Details

Weight 9

Volume 0.25 mc

Package 1

Downloads

Cover Brochure (pdf) - <http://www.midj.com/images/uploads/resources/cover.pdf>

Materials Certifications

Mirage Fabric

UNI EN ISO 12947, ISO 12945-2, UNI EN ISO 13934, UNI EN ISO E05-E06, EN ISO 105X12, UNI EN ISO 105 E04, EN ISO 105 B02, UNI EN ISO 105 D01, UNI EN 20105-C01, UNI 8423.

Natural Wool Fabric

CATAS N. 86473/1 25/10/07; CATAS N. 85687/1 28/09/07; BS 5852-1/79; BS 5852-1:1979

Inca Ecoleather

UNI 9175:1987

Magic Ecoleather

BS 5852-1:1979

Fiore Leather

BS 5852 parte 1; ISO 5402>50000 cicli; ISO 105B02 ? 5; ISO 3377-1 ?20 N; ISO 11644 ? 2.5 N/Cm; EN 1021/1-2; EN ISO 17233 -20°; IMO RES A 6528(16)

Vintage Leather

UNI EN ISO 105 B02 ?3; ISO 5402>50000 cicli; ISO 3377-1?20; UNI EN ISO 11640 Secco - Dry 50 c ?4 Umido - Wet 20 c ? 3; Sudore - Sweat 20 c ? 3

Bubble fabric

FIRE RETARDANT FABRIC: BS5852:2006 (p. 11 CRIB 5) EN1021-1 EN1021-2 UNI 9175:2010 - classe 1 im COMPOSITION: 100% PES MARTINDALE 35'000 CYCLES

Hot Fabric

FIRE RETARDANT FABRIC: BS5852:2006 (p. 11 CRIB 5) EN1021-1 EN1021-2 UNI 9175:2010 - classe 1 im COMPOSITION: 100% PES MARTINDALE 45'000 CICLI / CYCLES