



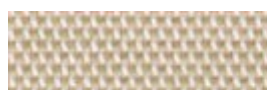
# Elettra

Chair with four legs frame fully upholstered in leather, ecoleather, fabric or custom's fabric.



## Finishing and Materials

### Coating



**Pix Fabric**  
13 colors



**Mirage Fabric**  
16 colors



**Natural Wool Fabric**  
15 colors



**Long Life Fabric**  
13 colors



**Inca Ecoleather**  
17 colors



**Magic Ecoleather**  
17 colors



**Vintage Ecoleather**  
4 colors



**Fiore Leather**  
15 colors



**Special Leather**  
8 colors



**Vintage Leather**  
4 colors



**Bubble fabric**  
14 colors



**Hot Fabric**  
13 colors

### Dimensions



Dimension	cm	inch
A	87	34.3
B	48	18.9
C	58	22.8
D	46	18.1

### Volumetric Details

**Weight** 8  
**Volume** 0.32 mc  
**Package** 1

---

## Downloads

[Elettra Brochure \(pdf\)](http://www.midj.com/images/uploads/resources/elettra.pdf) - <http://www.midj.com/images/uploads/resources/elettra.pdf>

---

## Materials Certifications

<b>Mirage Fabric</b>	Martindale: 100.000 cycles Composition: 100% Polyester Shrinking about 1% Fire retardant fabric: classe 1IM, B1 DIN 4102, M1, B1 OENORM Part.1, BS 5852 Crib 5, EN 1021, USA Calif. Bull 117, IMO 688 (17) - IMO 563 (14) - IMO 653 (16)
<b>Natural Wool Fabric</b>	Martindale: 100.000 cycles Composition: 70% Wool, 25% Polyamid, 5% Fibers Shrinking about: 1% Fire retardant fabric: BS 5852 part. 1, Cigaret test, Match test
<b>Long Life Fabric</b>	Martindale 40.000 cycles Composition: 74% Polyester, 18% Cotton, 8% Acrylic Shrinking about 1%
<b>Inca Ecoleather</b>	Martindale: 50.000 cycles Composition: 6% Cotton, 6% Polyester, 88% PVC Shrinking about: 1% Fire retardant fabric: Classe 1IM, BS 5852 Part. 1, IMO RES. A.652(16)
<b>Magic Ecoleather</b>	Martindale: 150.000 cycles Composition: 31% Cotton, 48% Polyurethane, 21% Polyester Shrinking about: 1% Fire retardant ecoleather: Classe 1IM, BS 5852 Part. 1, Cigaret Test, Match Test
<b>Vintage Ecoleather</b>	Ecoleather phtalatic free - R.E.A.C.H. 1907/2006/EU Breathable ecoleather Composition: 90% PVC, 7% Polyurethane, 3% Cotton Shrinking about 1%
<b>Fiore Leather</b>	BS 5852 parte 1; ISO 5402>50000 cicli; ISO 105B02 ? 5; ISO 3377-1 ?20 N; ISO 11644 ? 2.5 N/Cm; EN 1021/1-2; EN ISO 17233 -20°; IMO RES A 6528(16)
<b>Vintage Leather</b>	UNI EN ISO 105 B02 ?3; ISO 5402>50000 cicli; ISO 3377-1?20; UNI EN ISO 11640 Secco - Dry 50 c ?4 Umido - Wet 20 c ? 3; Sudore - Sweat 20 c ? 3
<b>Bubble fabric</b>	Martindale: 35.000 cycles Composition: 100% Pes Fire retardant fabric: BS5852:2006 (p. 11 CRIB 5), EN1021-1, EN1021-2, UNI 9175:2010 - classe 1 im
<b>Hot Fabric</b>	Martindale: 45.000 cycles Composition: 100% Pes Fire retardant fabric: BS5852:2006 (p. 11 CRIB 5), EN1021-1, EN1021-2, UNI 9175:2010 - classe 1 im