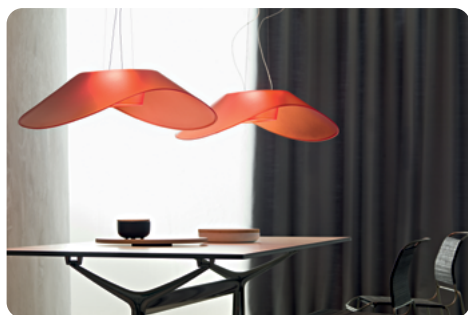


Fly-Fly, suspension

design Ludovica + Roberto
Palomba
2009

FOSCARINI



An innovative shape that was born of the desire for a large, light hanging lamp that was functional, but not high tech, approachable and original. A harmonious synthesis that combines familiar feelings with new emotions.

At first sight the wings express a concept of lightness, but they are the result of a long research process using a single mould to obtain a product of the right size with the ability to provide 360° illumination.

The same transparent form projects the light in the environment and also acts as a screen to avoid dazzle. This makes it even easier to place it in any space and at any height.

Fly-Fly, suspension technical info

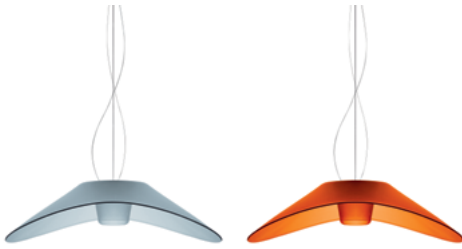
FOSCARINI

Description

Suspension lamp with diffused and direct light. Injection moulded polycarbonate diffuser with satin finish, suspended by two steel cables and transparent electrical cable. Ceiling flange with galvanised metal bracket and glossy chromed metal cover. Canopy decentralisation kit available.

Materials: polycarbonate

Colours: white, orange



Weight

net kg: 6,50
gross kg: 7,50

Packing

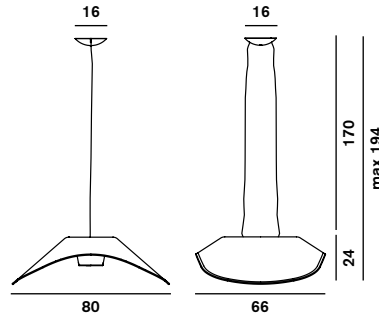
vol.m³: 0,150
n.boxes: 1

Bulbs

– halogen energy saver 1x230W R7s (118 mm)

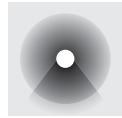


Certifications



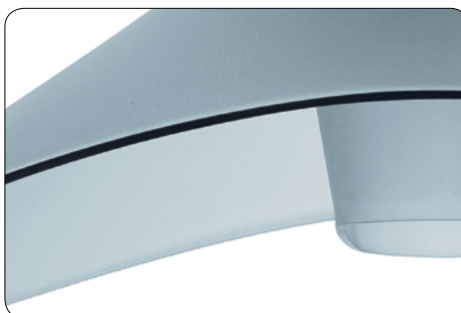
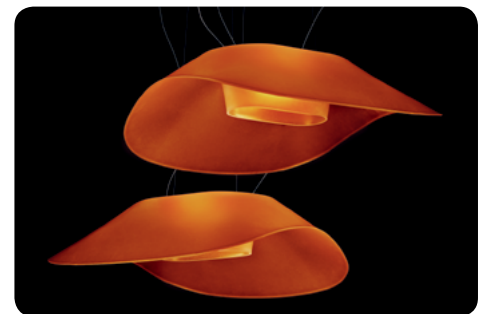
Brightness

semi-diffused and direct down light



[2D/3D drawings](#)
[photometric info](#)
[assembly instructions](#)

area download



Fly-Fly, suspension designer

FOSCARINI

Ludovica+Roberto Palomba

Ludovica+Roberto Palomba, architects, work and live in Milan. They founded Palomba Serafini Associati in 1994. They received numerous international awards such as Compasso D'Oro, Elle Decoration International Design Award, Red Dot, Design Plus, Good Design Award, German Design Award. Ludovica+Roberto Palomba plan architectures and design exhibitions worldwide. They work and are art director for some of the most established brands.

Go to concept site for Fly-Fly:
www.foscarini.com/fly-fly

