

# Aplomb, floor design Lucidi and Pevere 2013

FOSCARINI



The Aplomb project explores the technological and expressive possibilities of concrete, a rough yet at the same time appealing material, achieving a leap of scale and genre: from large contemporary architectural building to a small designer lamp. Aplomb floor lamp recalls a burning torch, to be grabbed and moved easily to where it is needed. Its light beam is an intense up-light, but it creates no glare because it is completely screened from view by the shape that encloses the light source, that visually takes up space for observers

up-front, but with a smaller thickness when observed from the side. Light and material are its absolute focus, without any other elements which would mar its pure design and style.

# Aplomb, floor technical info

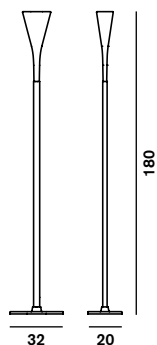
FOSCARINI

## Description

Floor lamp with indirect light. Cement diffuser, made with a special amalgam coloured with pigments, produced by pouring the fluid mixture into a mould. Extruded aluminium rod and die cast zinc alloy base coated with epoxy powder paint. The transparent cable is fitted with a dimmer which can be used both to adjust the level of luminous intensity gradually or as the on/off switch.

**Materials:** Concrete and metal

**Colours:** white, grey, brown



## Weight

net kg: 8,50  
gross kg: 13,00

## Packing

vol.m<sup>3</sup>: 0,115  
n.bboxes: 2

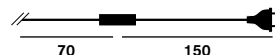
## Bulbs

— halogen energy saver 1x120W R7s (78 mm)



with dimmer included

## Cable length



## Certifications

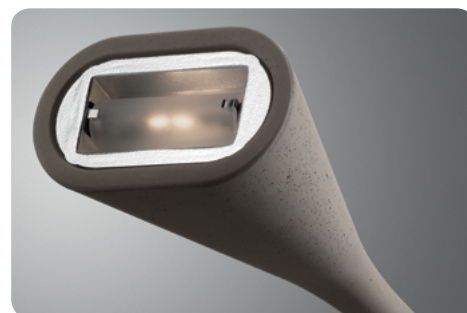
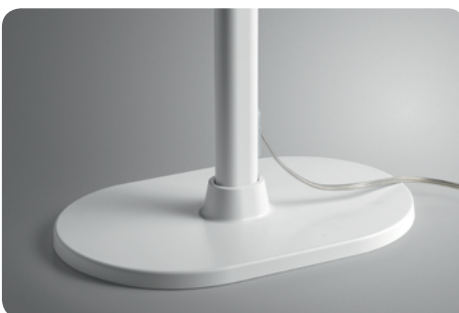
CE IP 20

## Brightness direct light



[2D/3D drawings](#)  
[photometric info](#)  
[assembly instructions](#)

[download area](#)



# Aplomb, floor designer+collection

**FOSCARINI**

## Lucidi e Pevere

Paolo Lucidi and Luca Pevere got together at well-known design offices in Milan. In 2002 they signed their first commissions together and, in 2006, establish Studio Lucidi & Pevere in Milan. These days, Studio Lucidi & Pevere is based in Udine and still undertakes industrial design work for internationally renowned companies, belonging to a large number of different sectors.

Watch the Aplomb video:



Go to concept site for Aplomb:  
[www.foscarini.com/aplomb](http://www.foscarini.com/aplomb)



## Aplomb Collection

