



Danny PB

design Midj R&D, 2016

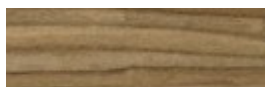
Danny armchair with wooden base. Shell upholstered in leather, ecoleather, fabric or custom's fabric.

Available version with wooden back face in the same base finish.



Finishing and Materials

Structure



Veneered Wood Walnut



Veneered Flamed Walnut



Veneered Wood Dark Oak



Veneered wood light oak

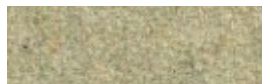
Coating



Pix Fabric
13 colors



Mirage Fabric
16 colors



Natural Wool Fabric
15 colors



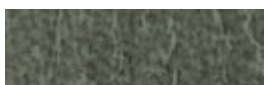
Long Life Fabric
13 colors



Inca Ecoleather
17 colors



Magic Ecoleather
17 colors



Vintage Ecoleather
4 colors



Special Leather
8 colors



Fiore Leather
15 colors



Vintage Leather
4 colors



Bubble fabric
14 colors

Dimensions



Dimension	cm	inch
A	77	30.3

Dimension	cm	inch
B	58	22.8
C	58	22.8
D	46	18.1

Volumetric Details

Weight 8

Volume 0.29 mc

Package 1

Gallery



Materials Certifications

Mirage Fabric

Martindale: 100.000 cycles Composition: 100% Polyester Shrinking about 1% Fire retardant fabric: classe 1IM, B1 DIN 4102, M1, B1 OENORM Part.1, BS 5852 Crib 5, EN 1021, USA Calif. Bull 117, IMO 688 (17) - IMO 563 (14) - IMO 653 (16)

Natural Wool Fabric

Martindale: 100.000 cycles Composition: 70% Wool, 25% Polyamid, 5% Fibers Shrinking about: 1% Fire retardant fabric: BS 5852 part. 1, Cigaret test, Match test

Long Life Fabric

Martindale 40.000 cycles Composition: 74% Polyester, 18% Cotton, 8% Acrylic Shrinking about 1%

Inca Ecoleather

Martindale: 50.000 cycles Composition: 6% Cotton, 6% Polyester, 88% PVC Shrinking about: 1% Fire retardant fabric: Classe 1IM, BS 5852 Part. 1, IMO RES. A.652(16)

Magic Ecoleather

Martindale: 150.000 cycles Composition: 31% Cotton, 48% Polyurethane, 21% Polyester Shrinking about: 1% Fire retardant ecoleather: Classe 1IM, BS 5852 Part. 1, Cigaret Test, Match Test

Vintage Ecoleather

Ecoleather phtalatic free - R.E.A.C.H. 1907/2006/EU Breathable ecoleather Composition: 90% PVC, 7% Polyurethane, 3% Cotton Shrinking about 1%

Fiore Leather

BS 5852 parte 1; ISO 5402>50000 cicli; ISO 105B02 ? 5; ISO 3377-1 ?20 N; ISO 11644 ? 2.5 N/Cm; EN 1021/1-2; EN ISO 17233 -20°; IMO RES A 6528(16)

Vintage Leather

UNI EN ISO 105 B02 ?3; ISO 5402>50000 cicli; ISO 3377-1?20; UNI EN ISO 11640 Secco - Dry 50 c ?4
Umido - Wet 20 c ? 3; Sudore - Sweat 20 c ? 3

Bubble fabric

Martindale: 35.000 cycles Composition: 100% Pes Fire retardant fabric: BS5852:2006 (p. 11 CRIB 5),
EN1021-1, EN1021-2, UNI 9175:2010 - classe 1 im